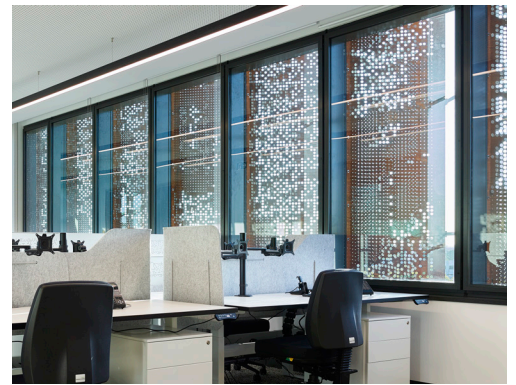
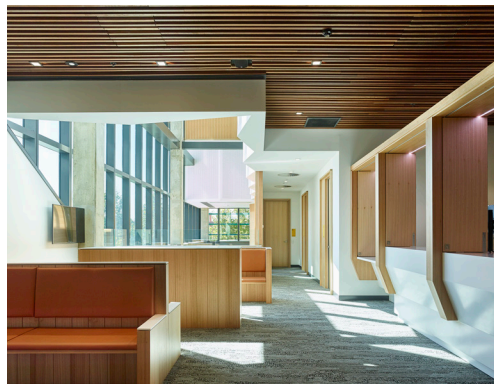
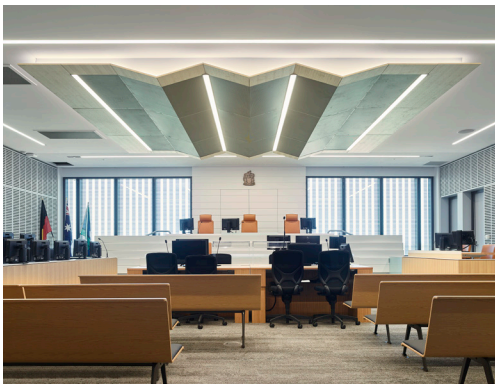




# SHEPPARTON LAW COURT REDEVELOPMENT

correctional architecture



## PROJECT DETAILS

CLIENT	Court Services Victoria
LOCATION	Shepparton, VIC
COMPLETION	2017
PROJECT TEAM	Kavan Applegate, Allan Pearson in association with Architectus and GHD Woodhead
PHOTOGRAPHY	Scott Burrows Photography

## PROJECT DESCRIPTION

Located on the corner of High and Wyndham Streets, the Shepparton Law Courts complete the Shepparton Justice Precinct with the Police Station to the west and the 1930s heritage Supreme Court building in the centre.

Working in collaboration with Architectus, Guymer Bailey provided design for the custodial areas of the Shepparton Law Courts as well as input into resolving the complex circulation paths throughout the building.

The brick building base honours the memory of the older country court houses, while the new five-storey courts building provides a contemporary expression for the open and transparent delivery of justice. This continues through to the lobby, which is inspired by the ancient River Red Gum, and provides a warm welcoming meeting place.