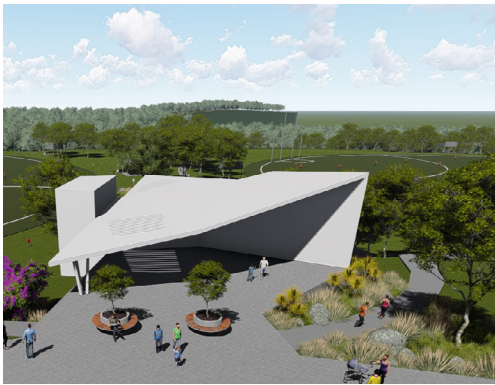




PARK RIDGE ROSIA ROAD PARK MASTERPLAN

landscape architecture



PROJECT DETAILS

CLIENT	Logan City Council
LOCATION	Park Ridge, QLD
COMPLETION	2018
PROJECT TEAM	Phil Jackson, Carlie Rice , Jaz Mill O Kane Rob Waddell, Kate Phillips, Chris Webb, Steve Niven
PHOTOGRAPHY	Guymer Bailey Architects

PROJECT DESCRIPTION

Logan City Council engaged Guymer Bailey Architects and Ross Planning to undergo a detailed spatial needs assessment and stakeholder consultation process to develop the masterplan for the Park Ridge Rosia Road Park precinct.

Nominated as 'Major Park' to accommodate a district sport and recreational park and environmental corridor, the Park Ridge Rosia Road Park masterplan provides clear direction forward to create diverse and inclusive spaces that cater to every age and ability.

Key elements of the masterplan include an AFL regional facility with two full-size ovals and a clubhouse, a cycling precinct with a criterium track, banked track, pump track and trial area, recreational trails and a nature play area with amenities and picnic facilities.